

MIXED-USE DEVELOPMENT, LONDON E14

NOW FIRST LIMITED



Mixed Use Development, London

Mixed use development that is comprised of residential new build units with retail units at ground and canal level.

Size: Approximately 30,000 ft²
Value: Undisclosed
Status: Completion 2023/24
Type: Mixed-Use

The project is part of a mixed-use scheme delivering co-living, office, commercial and residential space in three new buildings plus refurbishment of a warehouse.

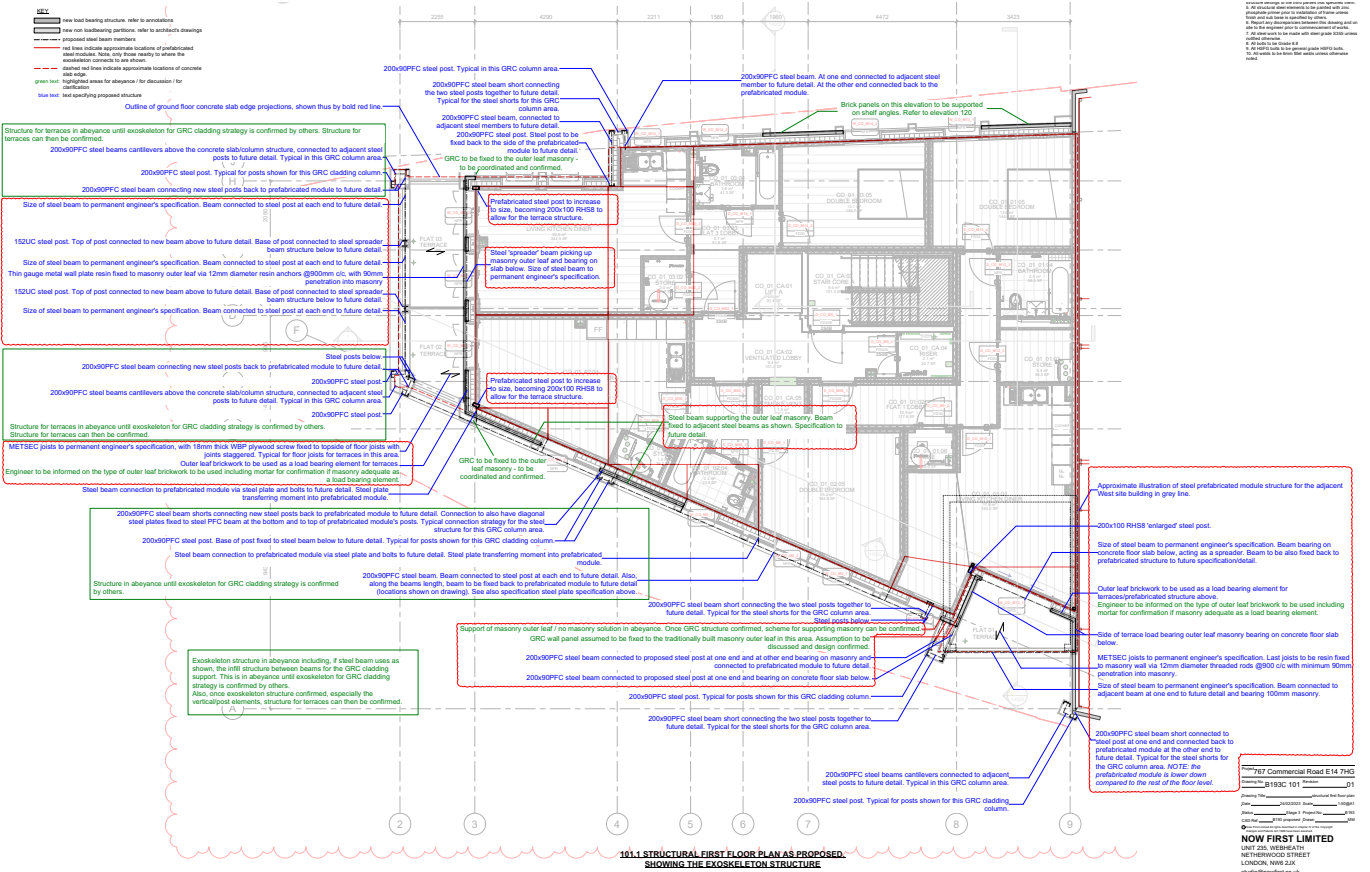
The site is sandwiched between Commercial Road and Limehouse Canal. It comprises four parcels of land, Corner, West, Centre and East.

The corner site includes a new basement level formed from reinforced concrete, prefabricated steel framed superstructure and Glass Reinforced Concrete and steel framed facade.

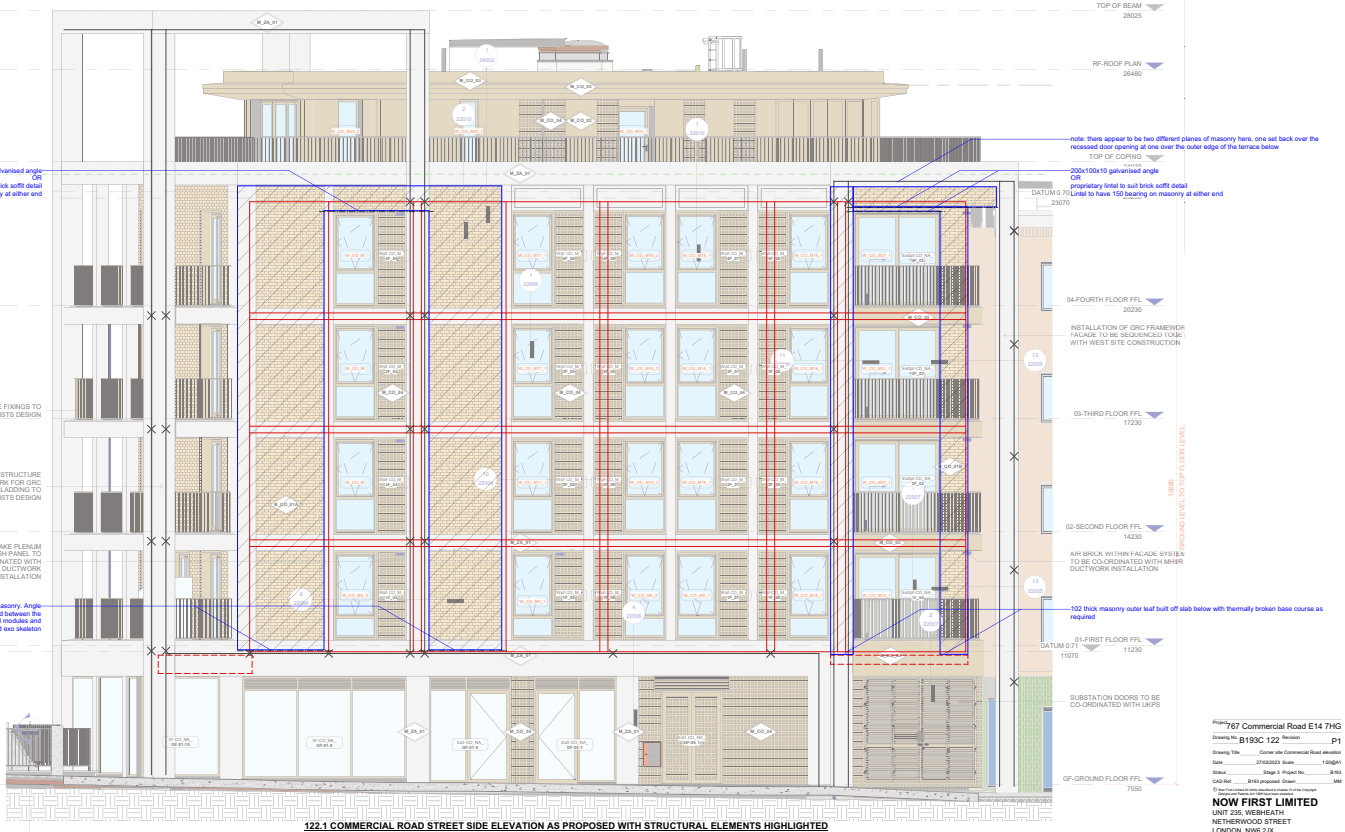
Now First provided structural engineering consultancy services in relation to:

- structural stability,
- construction methodology,
- temporary works design and
- permanent works detailed design.





Plan mark up taken from the design process



Elevation mark up taken from the design process

For more projects examples please click our website link: www.nowfirst.co.uk